

# Using Nautilus for Data Triage

Nautilus (see Figure 1) is a popular GUI file manager for Linux and is the default file manager in Ubuntu Linux 12.04. It functions similarly to *Windows Explorer* on Windows systems and *Finder* on Macs. One key feature of Nautilus is the ability to add custom functionality by incorporating user-created [back-end scripts](#). These scripts work much like plug-ins for a web browser and extend Nautilus's basic functionality. We have included a number of custom Nautilus scripts in the BitCurator Environment specifically geared to assist the digital archivist in pre-ingest data analysis. See below for specific instruction on how to use Nautilus to perform a number of critical data analysis tasks.

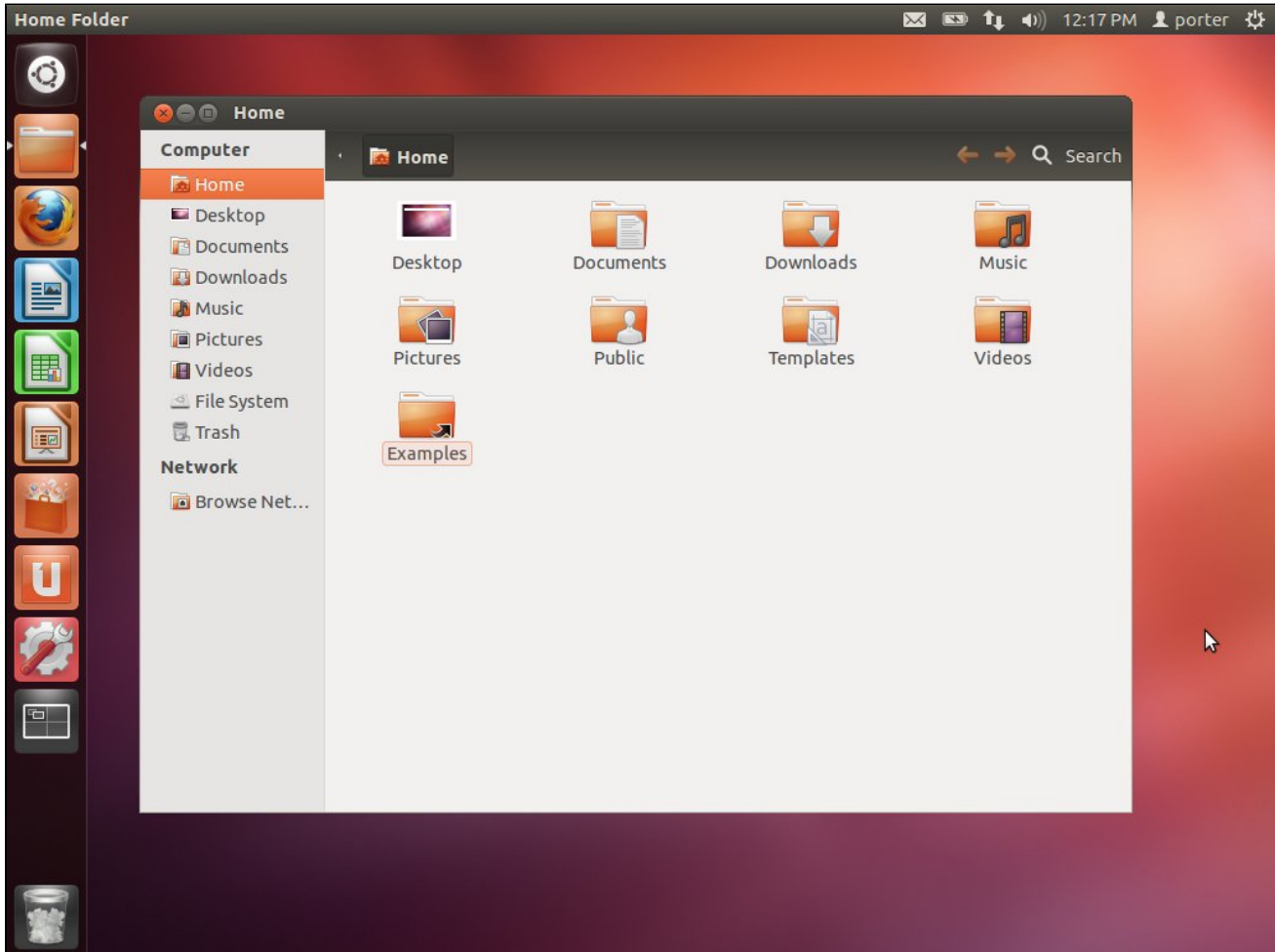


Figure 1: Nautilus file manager in Ubuntu Linux 12.04

Common disk image, file, and metadata handling tasks:

- [Calculate and Display MD5 Sums](#)
- [Display a file in Hex editor](#)
- [Display Disk Image Metadata](#)
- [Extract Compressed Files](#)
- [Live Search for Files by Name and Content](#)
- [Review File Info and File Details](#)

Related articles

- [Creating a Disk Image Using Guymager](#)
- [Using Nautilus for Data Triage](#)
- [Configuring BitCurator to enable users to authenticate with Active Directory accounts](#)
- [Access and Export Files from Disk Images](#)
- [Find Potentially Sensitive Information with Bulk Extractor Viewer](#)